

Looking South

Mine

From Old Water Tower

W. Wall Street



Moweagua Mine Tipple
West end of Cherry street



Moweagua Mine Tipple



Bill Herriot
Mine Engineer (Father of
Mary Jane White)

West Side of Mine Tipple



H. Knight

Progressive Miners
Moweaqua, Illinois





1932 Moweaqua Mine Disaster Christmas Eve.



TAKEN
DURING
1932
MINE
DISASTER

Taken at time of Mine Disaster 1932 Loading Ambulances





Dining Car furnished by Illinois Central Railroad



*Bob
Howard*

**TAKEN
DURING
1932
MINE
DISASTERS**

Farmers lined up to get coal
for winter Heating





South Elevator

ANDREW & ADAMS, GRAIN DEALERS.

1914

Elevator and Storage Capacity 100,000 Bushels.

Phone 37.

Moweaqua, Illinois.



ANDREW & ADAMS, GRAIN DEALERS.

South Elevator

Elevator and Storage Capacity 100,000 Bushels.

Phone 37.

Moweaqua, Illinois.

1914

South Elevator - Andrews Grain Co - 1914



Old
Water, Tower

Shelling Corn
South Elevator

South Elevator

Steam Engine Used for power shelling corn

Coffmans
Mill

Water
Wagon





H. Knight

Shelling Corn - South Elevator - Mowagua

Bob Dorsey
Wrecking
Radford Elevator



ILL CENT DEPOT
MOWEAQUA, ILL.
1960

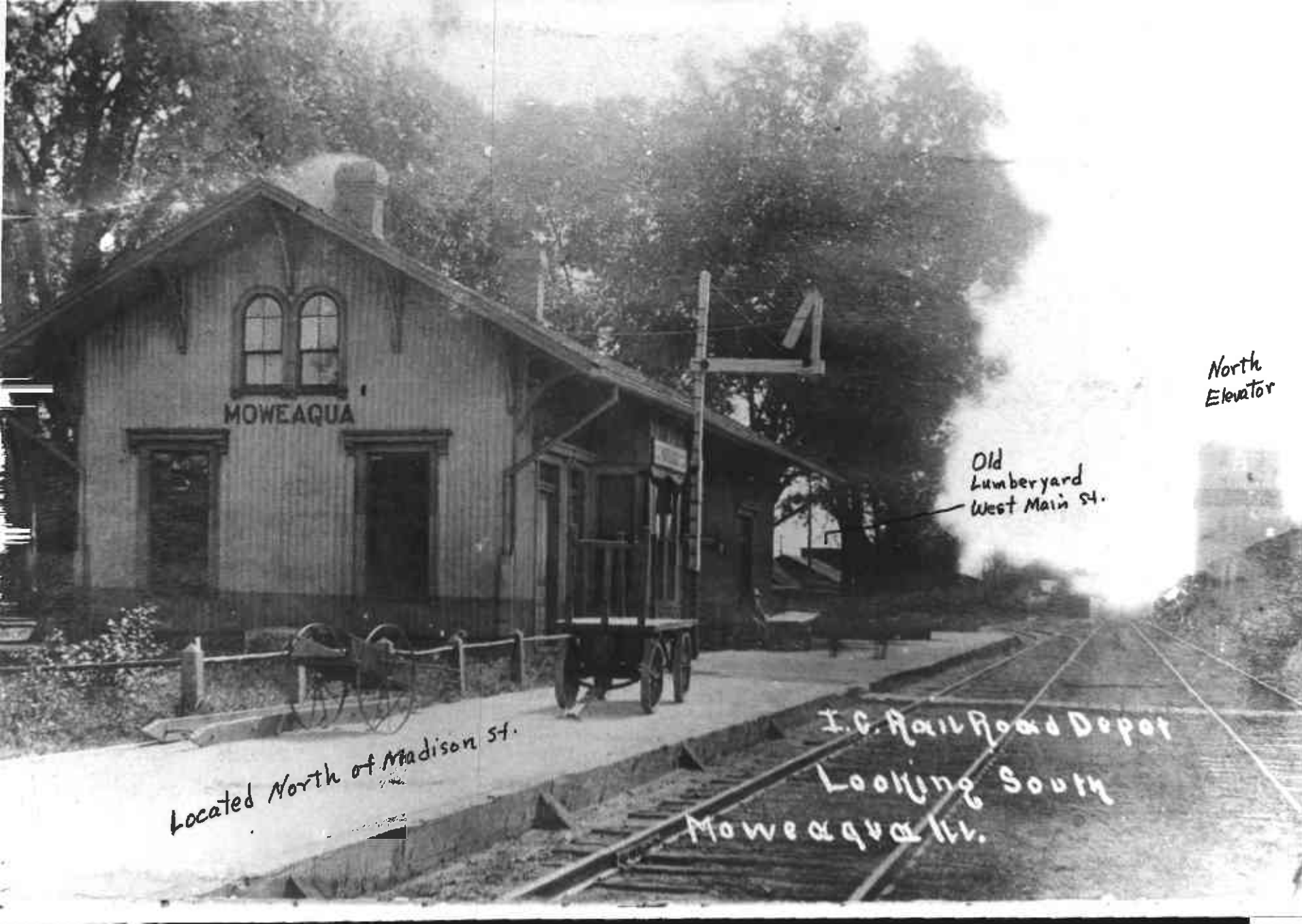


I.C. Depot Moweaqua, Ill



Moweagua Depot.
looking North.
It was North of Madison St.





MOWEAQUA

North
Elevator

Old
Lumberyard
West Main St.

Located North of Madison St.

I.C. Railroad Depot
Looking South
Moweaqua Ill.

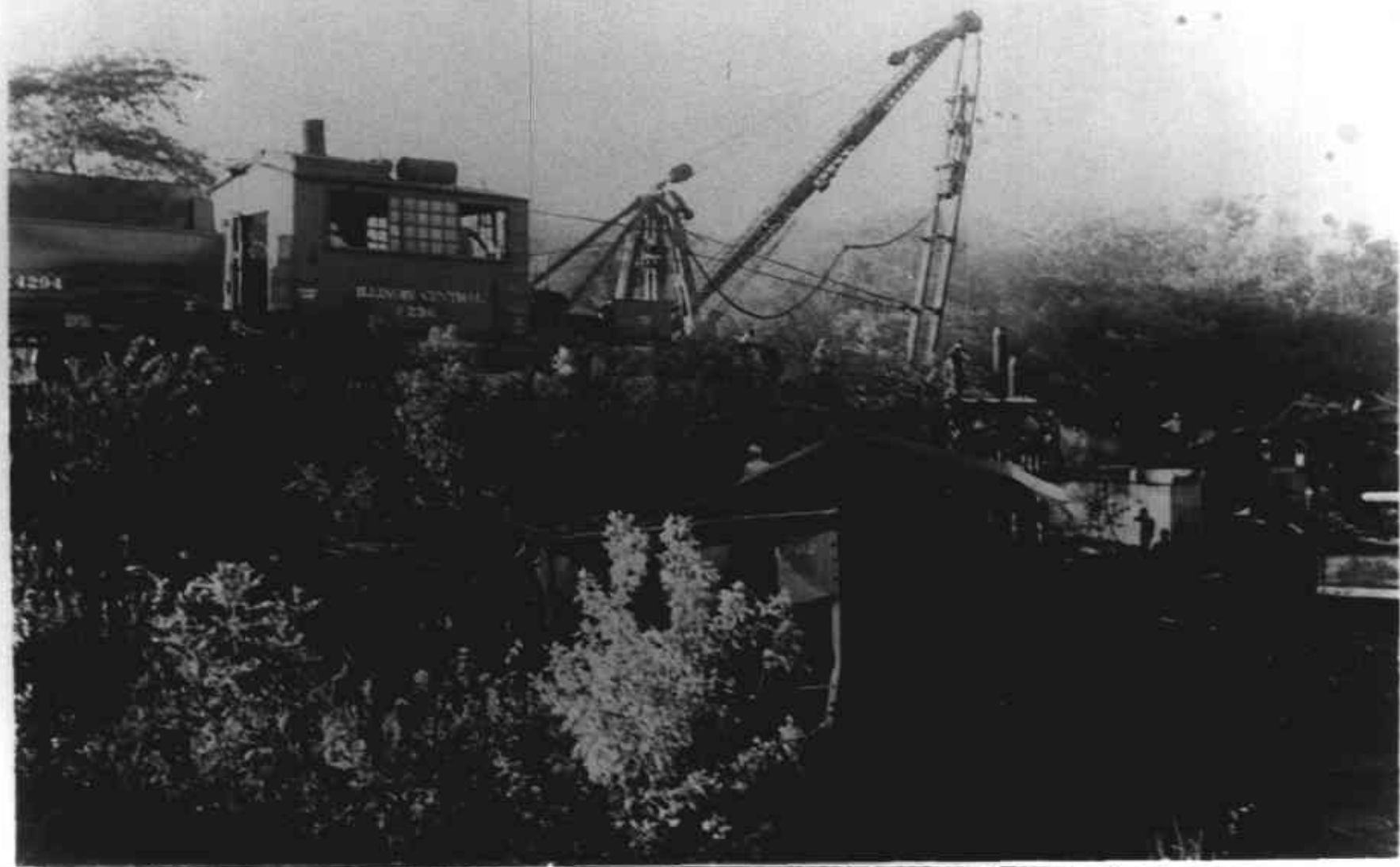


Station of the Illinois Central, Moweaqua, Illinois.

Looking South



Train Derailment - $1\frac{1}{4}$ mile South of Moweaqua
Picture facing north About 1950

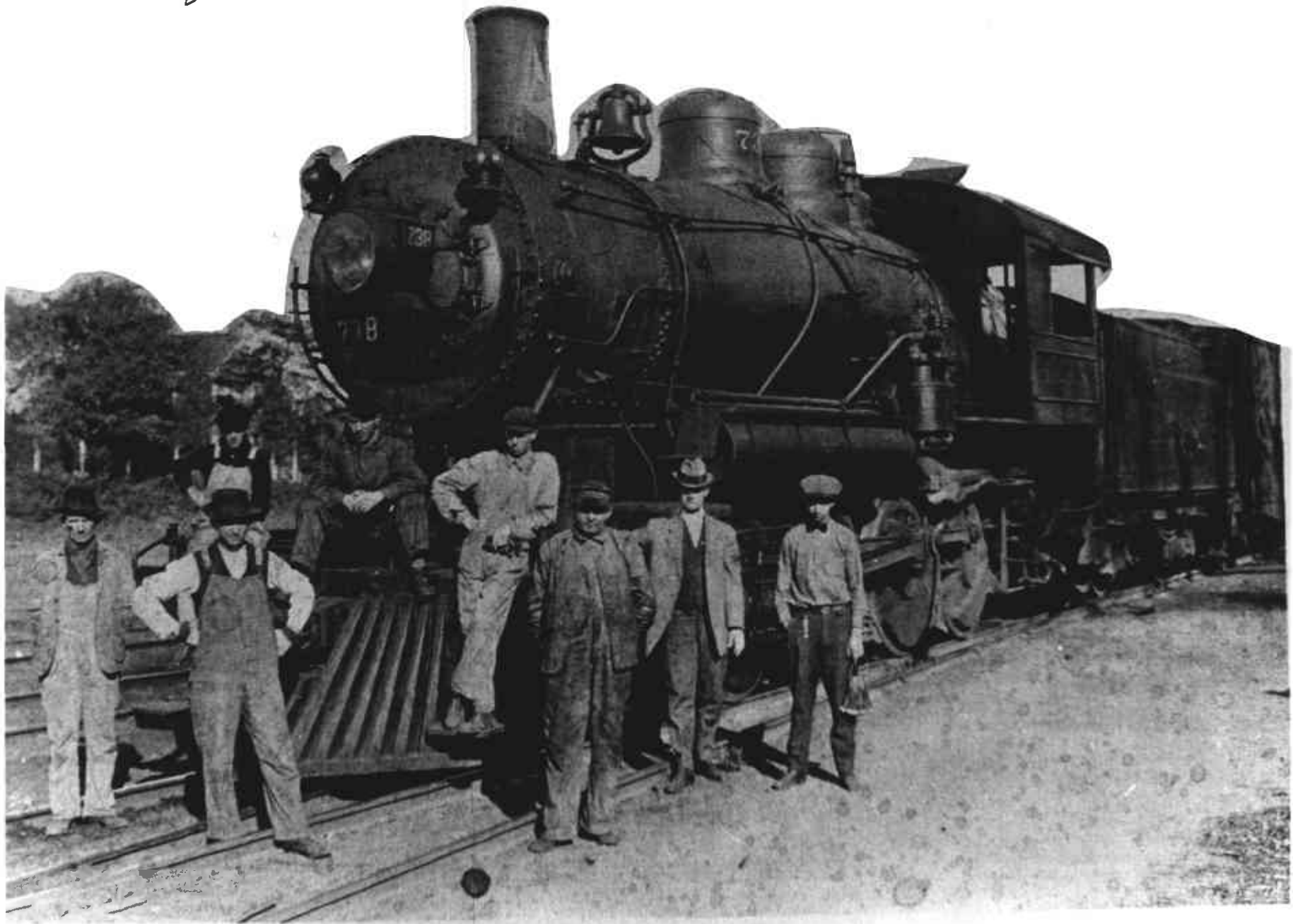


- Railroad Bridge South of Moweaqua Colapses -
"1948"



Corner of North Main and West Madison - Installing double side-walk to R.R.
Location - 15 Hal Burgener lot.

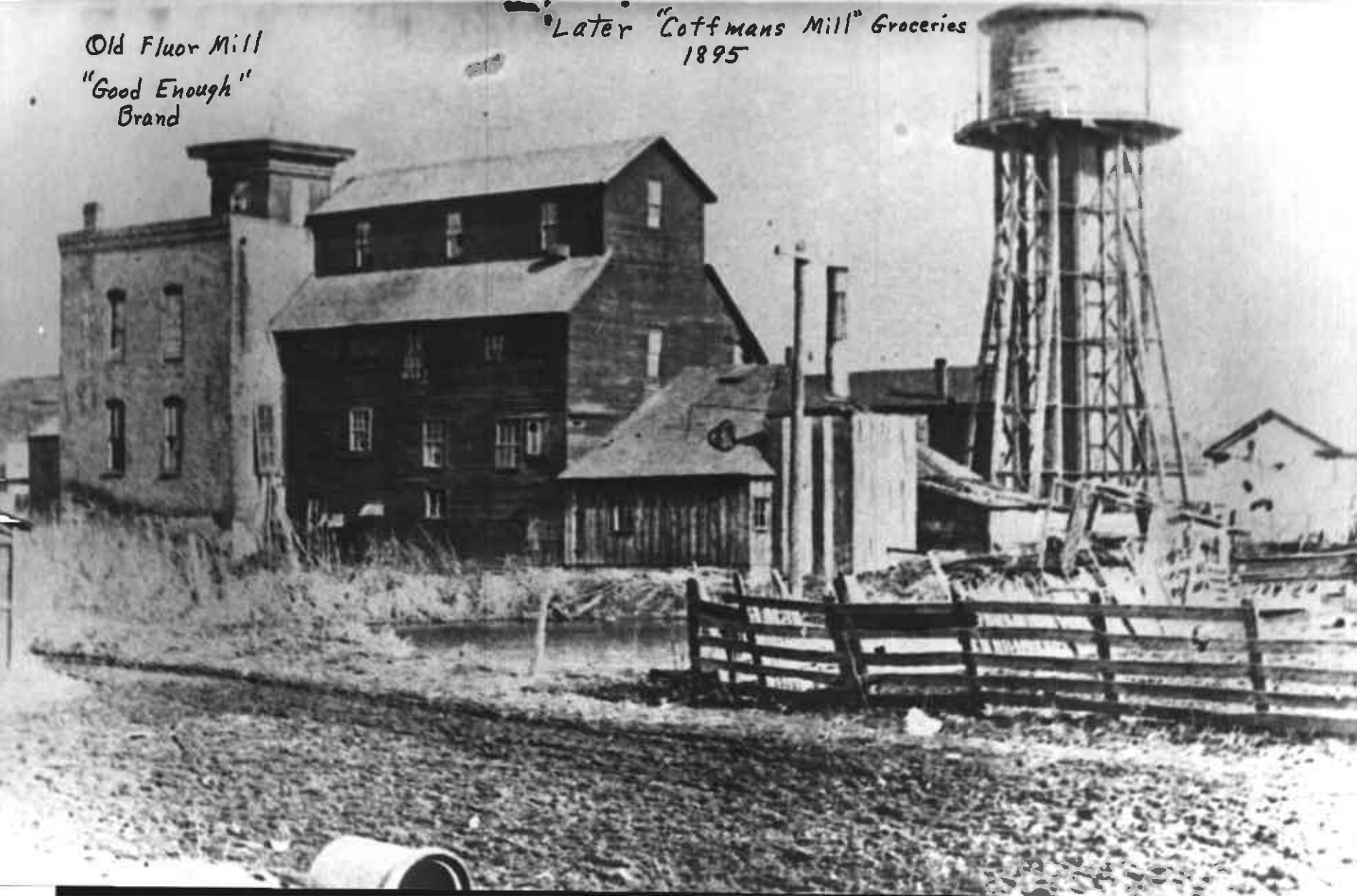
*Illinois Central Train Crew
Near Moweagua*





Old Flour Mill
"Good Enough"
Brand

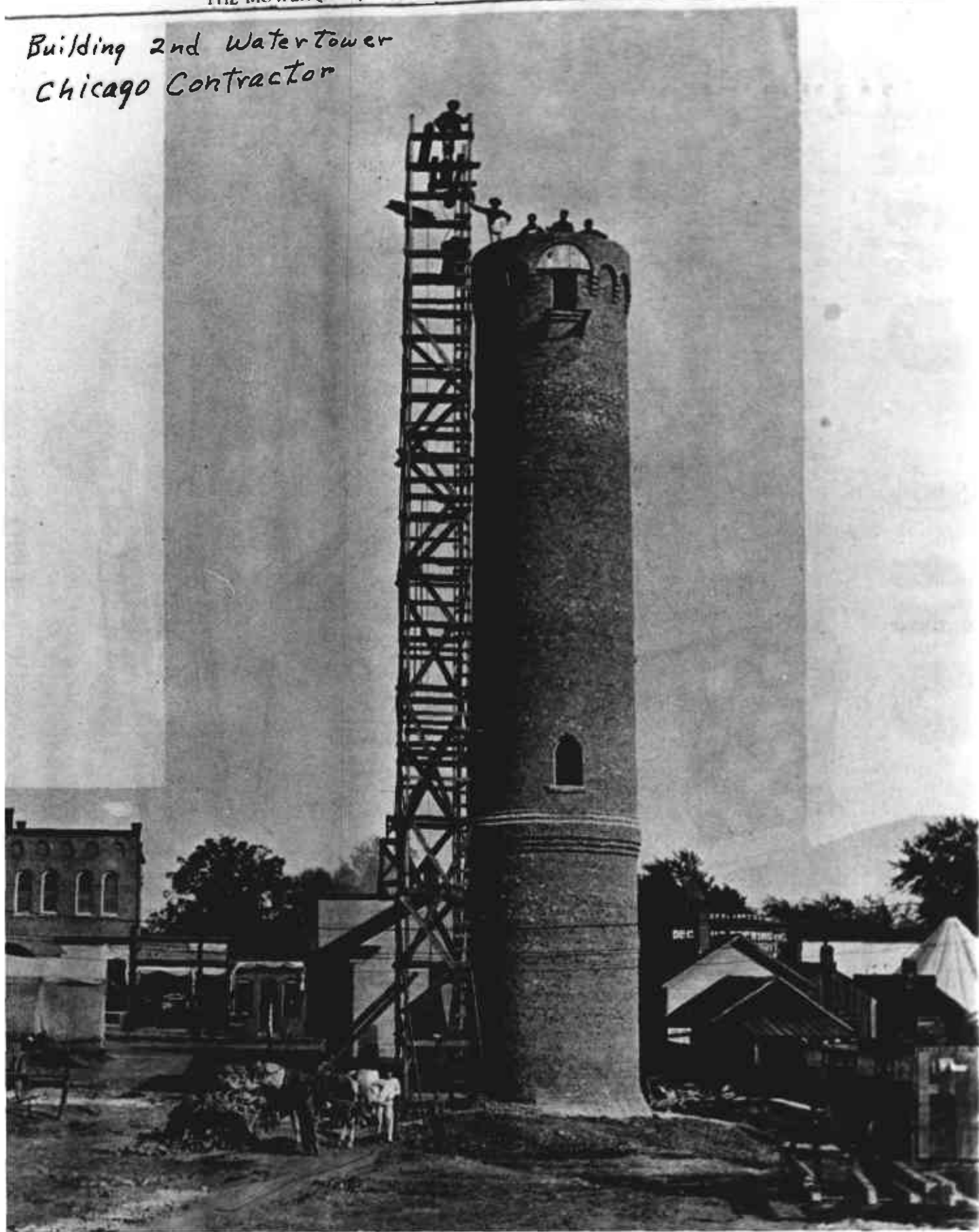
Later "Coffmans Mill" Groceries
1895

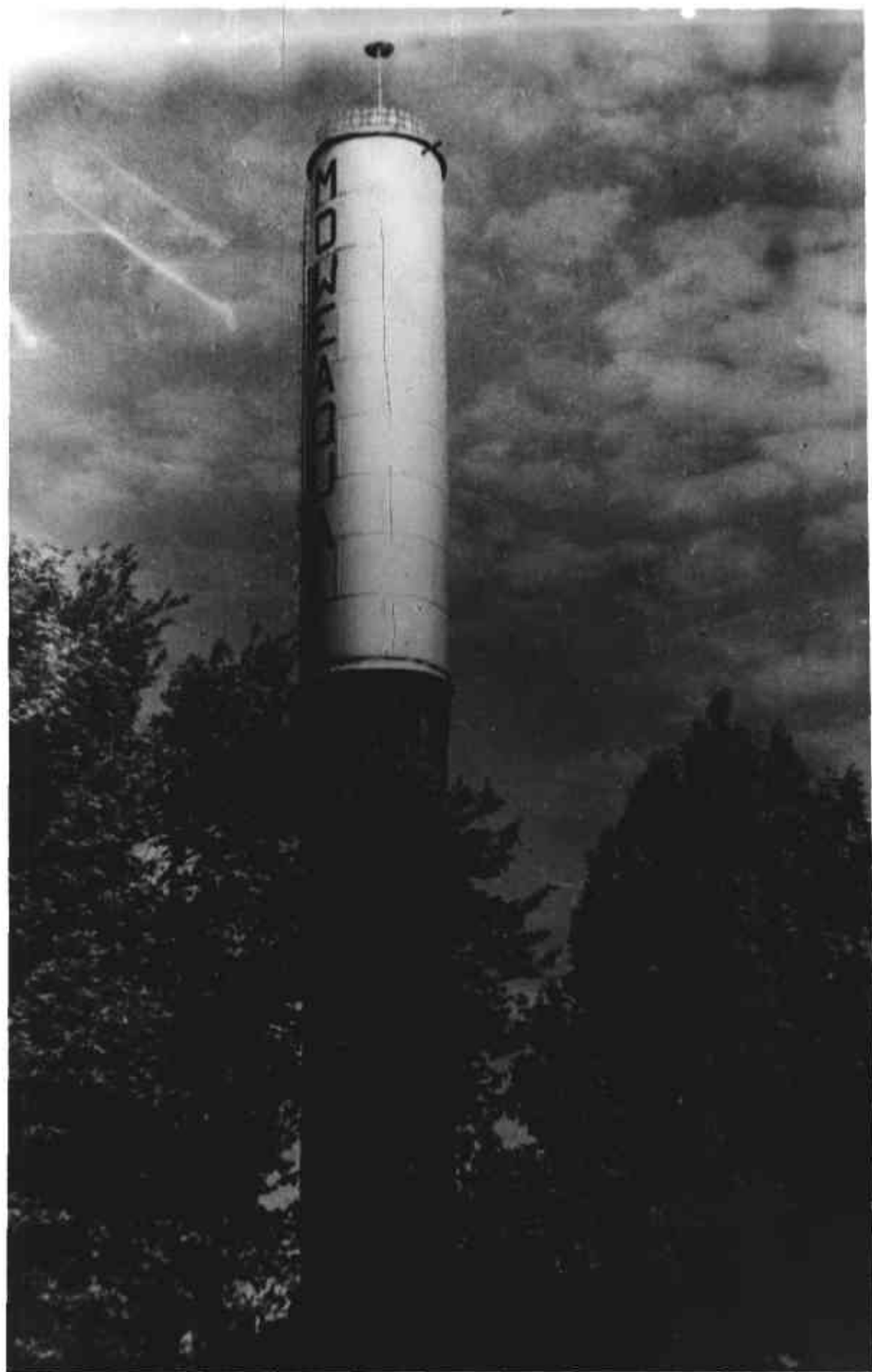


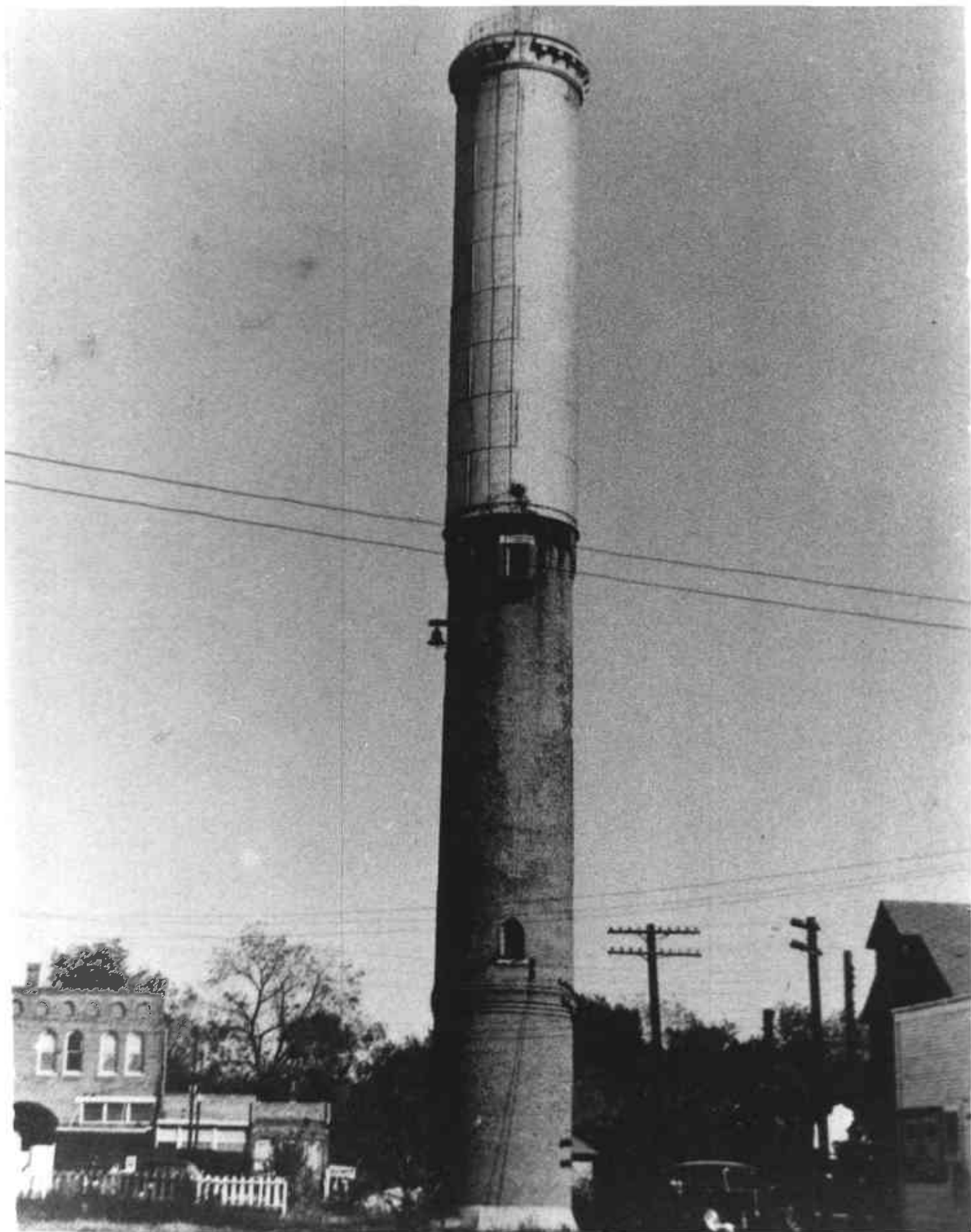
*Old watertower
South of Mill*



Building 2nd Watertower
Chicago Contractor







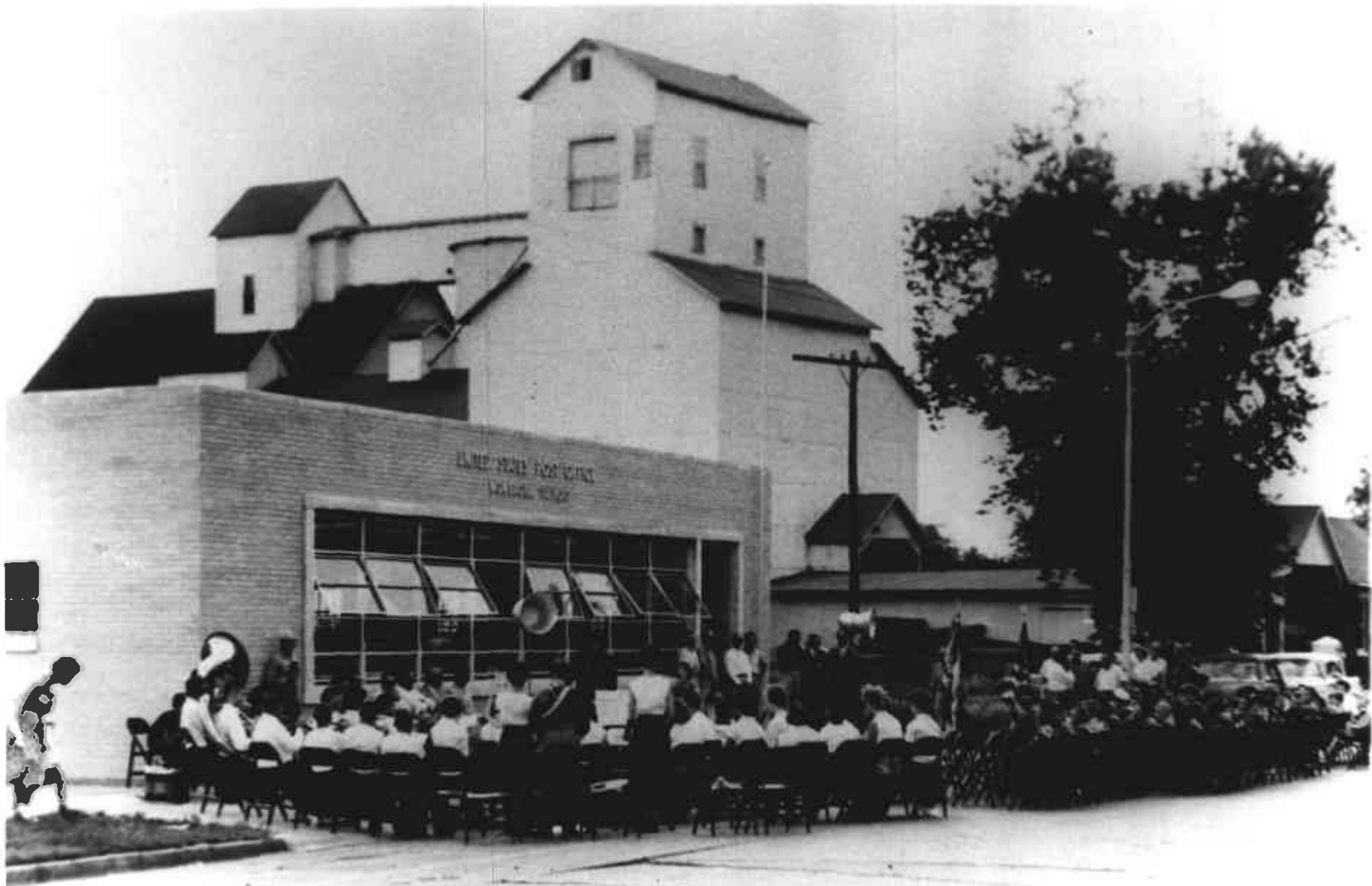


Leslie H. Moss and Old Tinker



Moweagua Post Office - Located where Rotary Building now stands.





Dedicating the New Post Office - North Elevator in Background




Postmaster
Merlin
Reatherford

Wilma Woolers
Eck

George (Master Golfer)
Corby



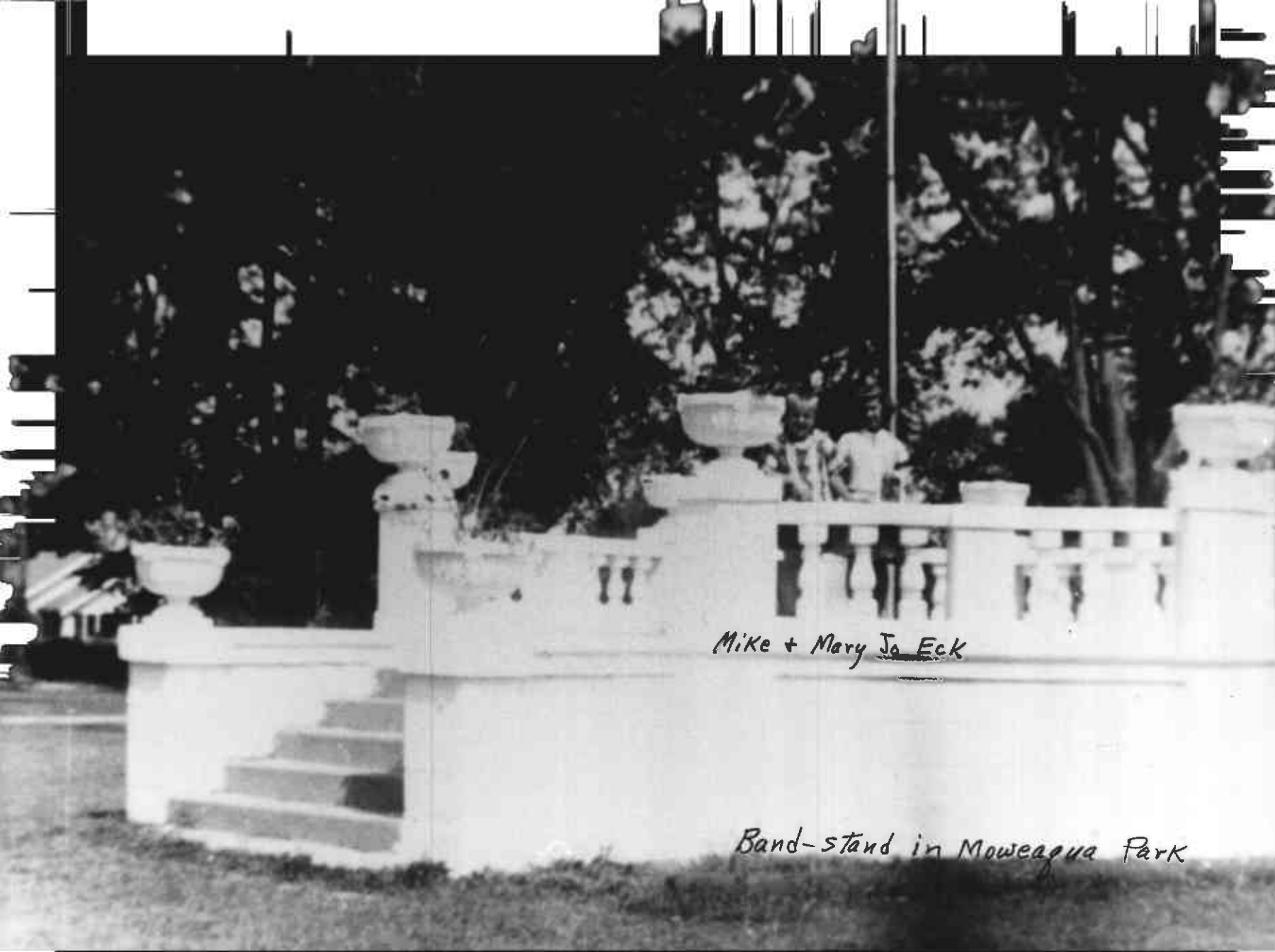
Moweaqua City Park



PARK VIEW MOWEAQUA, ILL.



Bandstand - Mowagua City Park



Mike + Mary Jo Eck

Band-stand in Moweaqua Park



"1915" Mowagaa Cars & men on Putnam Street South of School

Glenn Humphrey
 Hal Bohlen
 James Bradbury
 Nibel Elmore
 Jim Guelch
 Jim Gordon
 Sid Macklin
 Fred Shuster
 Carl Hemer
 Tom Hemer
 Jerry Gordon
 Rex Lee Waddell
 Roscoe Hooper
 Ed Banner
 Coy Waddell
 Harold Bunning
 Woody Cox
 Paul Shaddock
 Jess Pearson
 Paul Warnick
 Paul Bridgman
 George Lockhart
 Francis Wolff
 Blaine Abraham
 Ervil Pierce
 Mont Primmer
 Wayne Gregory
 Charles Miller
 Charles Kemper Sr.
 Arthur Downs



1950 - Farmers Plowing for Verne Waddell



H. Knight

"Bull" tractor

"1915"

Ed. Zindel

Age 30

We think this tractor was made
by the Electric Wheel Co., Quincy, Ill;
and called "The Allwork". The
Company built tractors from 1912-1930.

J. H. Van Syckel, pictured on tractor,
moved to this farm in 1917. (Date of picture
unknown.)

Robert Van Syckel

This company became part of Firestone
Tire & Rubber Co. in 1957.



"The Allwork" by Electric Wheel Co. Quincy, Ill 1912-1930 J.W. Van Dyckel
Assumption, Ill.

James Hedges Sr.

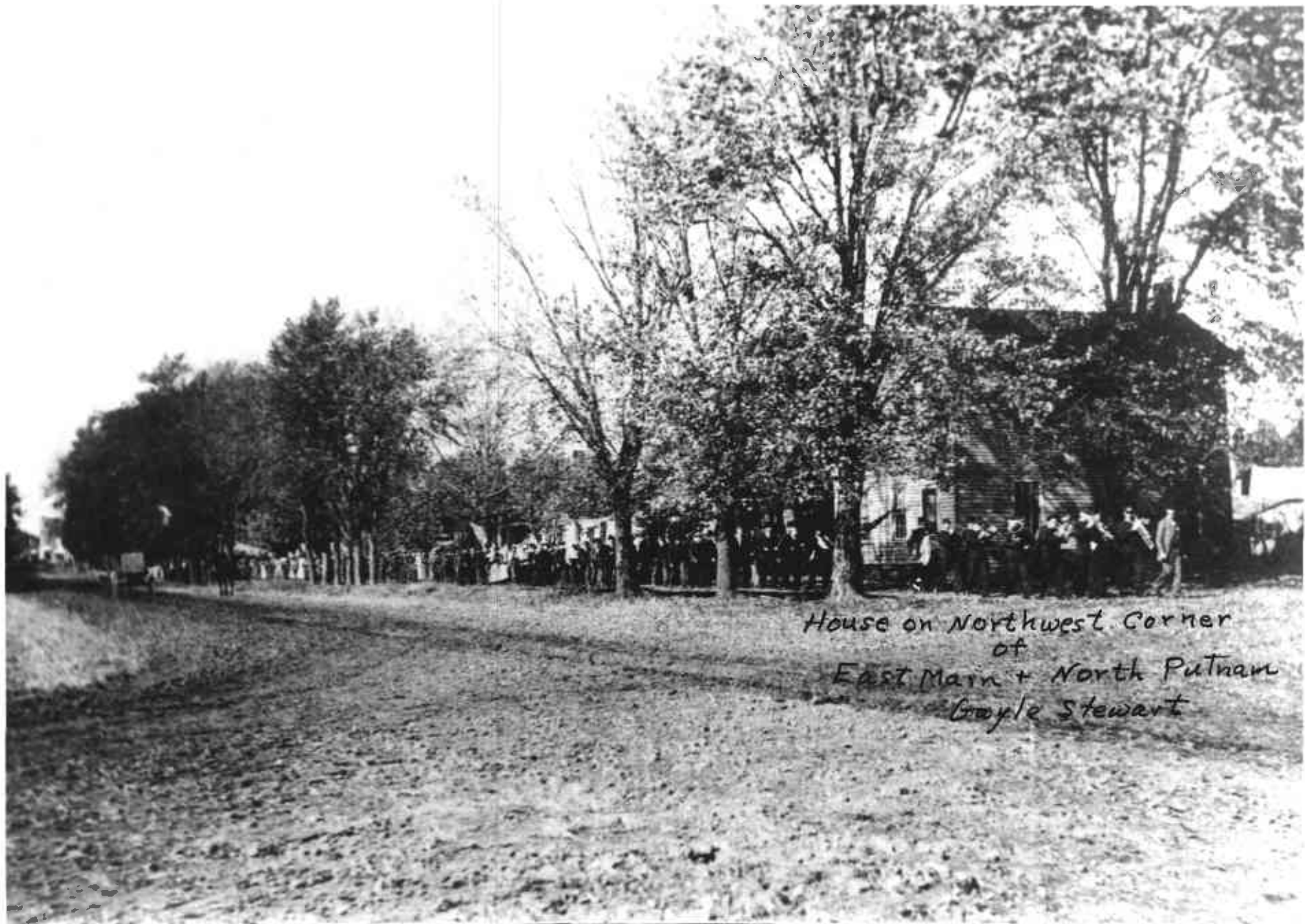
CAN YOU IDENTIFY



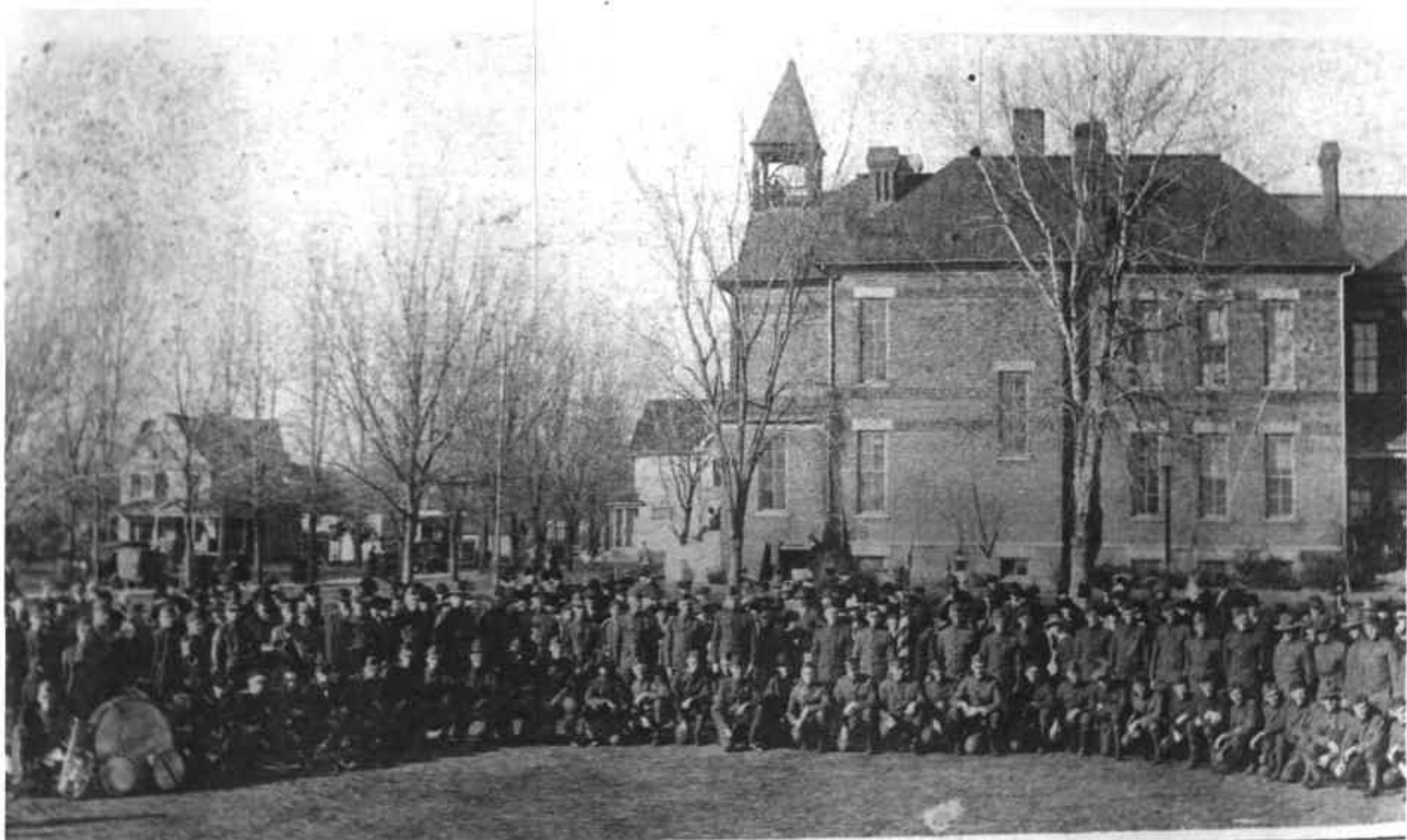


Don Drew

Trail ride in California

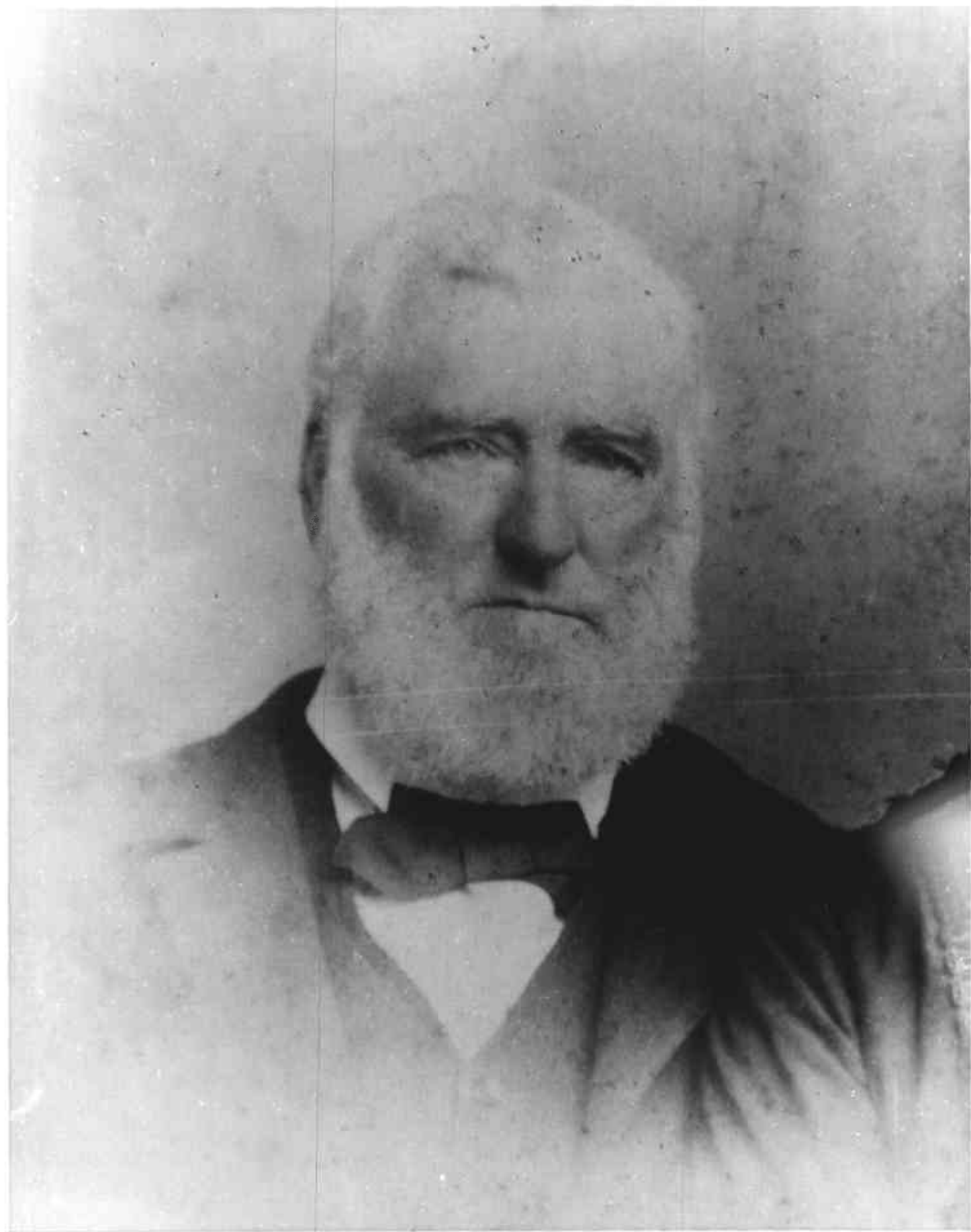


House on Northwest Corner
of
East Main + North Putnam
Gayle Stewart



World War I Celebration Moweagua School













Mayor
Dr. John William
Dobson
1927+28







Jenkins



"Bunt" May



Bill Overland



Bob Moore



Don Brooks



Rudy Smith



Police receive Special Camera



Officer Smith Mayor Forstner

Chief Brooks



Gene seybold - Dedication of Moweagua Golf Course

Cutting Ribbon

Moweagua Golf Course





Don Wright - President, Moweagua Golf Course



Dr. I.D. Baker To Be 'This Is Your Life' Honoree

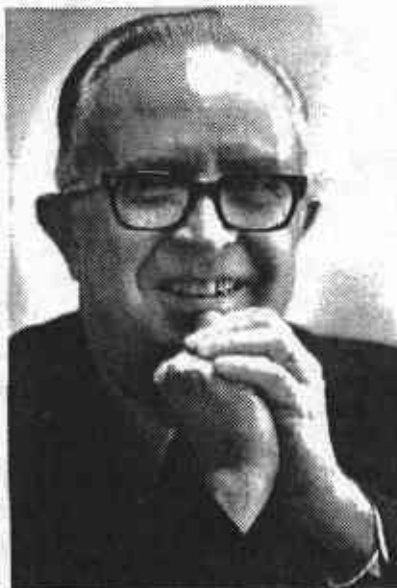
Breaking from tradition, the Ladies of Elpinice have announced the honoree previous to the program and have changed its time from Friday evening to Sunday afternoon during the Greenville College Homecoming Weekend.

Selected as this year's honoree is Professor Emeritus I. D. Baker. The program to be held at 2 p.m. Sunday, was rescheduled to avoid conflicting with the activities associated with the inauguration of President Robert E. Smith on Friday.

The "This Is Your Life" will be held in LaDue Auditorium. Like all homecoming activities, it is free and open to the public.

Prof. Baker graduated from Greenville College cum laude in 1933 with a B.S. degree in science. He went on to earn two master's degrees and a Ph.D., all from the University of Illinois.

He served in public school systems until 1956, including a total of 17 years as superintendent in four different school districts. Prior to joining the Greenville College faculty in 1956, he served on the college's board of trustees for two years as vice chairman and one year as chairman. He was appointed executive vice president of the college in 1956, as well as asso-



DR. I. D. BAKER

ciate professor of education.

Baker went on to serve the college in a number of capacities, including director of alumni affairs, director of public relations and development, director of church relations, assistant director of admissions, chairman of the division of teacher education, and chairman of the department of education.

During his tenure, Greenville

College was accredited by the National Council for Accreditation of Teacher Education for the first time. Baker was also instrumental in beginning the professional semester and student teaching programs at the college.

President Emeritus W. Richard Stephens commented, "In coming to Greenville College from the superintendency of the public schools, Dr. I.D. Baker brought a strong professional and public service dimension to the college's mission in the community and the surrounding region. Dr. Baker is worthy of this honor for at least two reasons: because of his significant contributions preparing hundreds of teachers for our nation's schools, and because he is a Christian gentleman whose quiet ways are worthy of emulation in today's sometimes uncivil society."

Professor Emeritus Delbert Catron said of Baker, "He really expanded our acquaintance with local school superintendents and principals because he was a former superintendent. He enhanced the public relations with schools in our area. He also built up the teacher education department. (Under his leadership,) the department grew and became a very important part of the total curriculum."



1950
Mowcagua, Ill.













Janet
1 child

2nd
Mrs. Baker

J. D. Baker

Ellen
5 children

Joyce
3 children